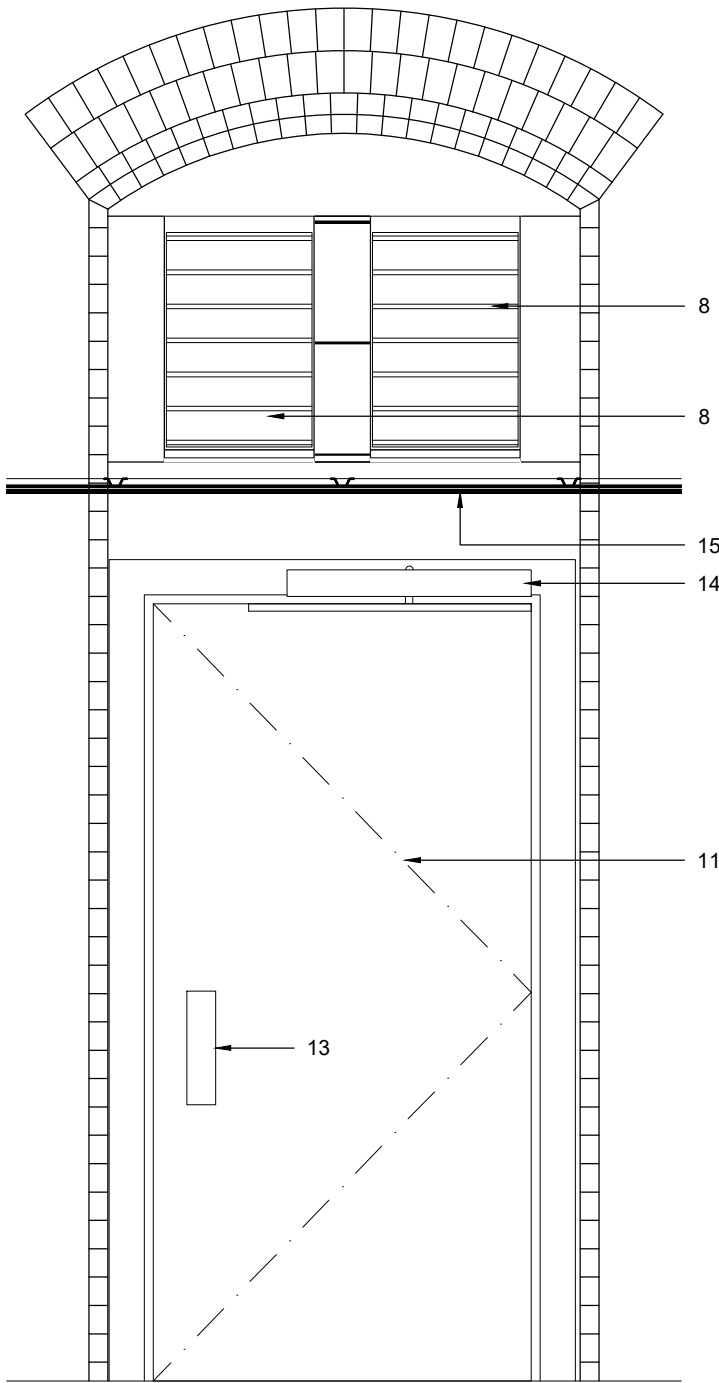


Moat Arches - Door as Proposed  
External Elevation D.A6.01

1  
3716

1:20 @ A3



Moat Arches - Door as Proposed  
Internal Elevation D.A6.01

2  
3716

1:20 @ A3

- Key**
- 1. Portland stone cleaning**
    - Staining and discolouration to be removed using appropriate cleaning techniques. All techniques to be trialled on site and agreed with heritage architect and curatorial team. Refer to specification section C40.
  - 2. Portland stone defrassing and redressing**
    - Where Portland stonework has been damaged due to previous removal of windows, doors or ductwork, stone is to be dressed to match the existing and samples approved prior to carving. New stone is to be carved, where required, to match existing face and edge styles, proportions and profiles by an appropriately experienced stonemason or craftsman. Refer to specification section C41.
  - 3. Mortar repairs to Portland Stone**
    - Where stonework repairs are no greater than 100mm in any dimension, these are to be undertaken with mortar repairs. Refer to specification section C41.520.
  - 4. Indented stonework repairs to Portland Stone/ new stonework to match existing**
    - Where stone has been damaged and larger repairs are necessary, replacement stone is to be sourced to match the existing, and samples approved prior to carving. New stone is to be carved to match existing face and edge styles, proportions and profiles by an appropriately experienced stonemason. Refer to specification section C41.
  - 5. Windows - restoration**
    - Where paint buildup is heavy, strip paintwork from stone mullions and transoms as specification section C40.232.
    - Assess stone for any repair, indents or repointing of joints in lime mortar
    - Test window paint for lead paint prior to stripping, then strip paint from metalwork sufficient to prepare and prime surface for redecoration
    - Redecorate in alkyd gloss on metal primers as specification section M60
    - Ease and adjust all pivots, fasteners etc
    - Install new linseed oil putty to window panes and frames where required to fix and seal as specification section L40
    - Glazing bars to be replaced if condition dictates. Metalwork to be fabricated by appropriately experienced blacksmith or fabricator. All profiles to be fabricated to match existing profiles as specification section L10.
  - 6. Windows - new windows**
    - Where paint buildup is heavy, strip paintwork from stone mullions and transoms as specification section C40.232.
    - Assess stone for any repair, indents or repointing of joints in lime mortar.
    - New window frames and casements to be made up to match surrounding historic examples. Metalwork to be fabricated by appropriately experienced blacksmith or fabricator. All profiles to be fabricated to match existing profiles as specification section L10.
    - New glass to be single glazed handmade crown glass to match historic examples elsewhere on elevation as specification section L40.210.
    - Install new linseed oil putty to window panes and frames where required to fix and seal
  - 7. Replacement Glass**
    - Textured glass to be removed and replaced with single glazed handmade crown glass to match historic examples elsewhere on elevation as specification section L40.210.
  - 8. New Grilles within windows**
    - Existing windows to be carefully removed from stone tracery, leaving rebates intact.
    - Stone rebates to be cleaned and freed from any residue, mortar or old putty and stone surfaces to be inspected for condition and integrity as specification section C40.
    - New grilles to be inserted into existing rebates and putted in to provide weatherproof junction as specification section L10.650.
    - New grilles and ductwork to be supported on Unistrut structure suspended from brick soffit/ supported on new ceiling structure designed by Jamie Fobert Architects.
  - 9. Replacement Grilles**
    - Existing grilles to be carefully removed from stone tracery, leaving rebates intact.
    - Stone rebates to be cleaned and freed from any residue, mortar or old putty and stone surfaces to be inspected for condition and integrity as specification section C40.
    - New grilles to be inserted into existing rebates and putted in to provide weatherproof junction as specification section L10.650.
    - New grilles and ductwork to be supported on Unistrut structure suspended from brick soffit/ supported on new ceiling structure designed by Jamie Fobert Architects.
  - 10. Timber Repairs - Painted Finish**
    - Full scope of timber repairs to be determined following condition survey.
    - Timber surfaces of doors and frames to be rubbed back and evaluated for defects. Refer to specification section C51.
    - Allow for new painted finish to be applied. Specification of finish to be confirmed following on site tests and sampling, but allow for exterior eggshell as specification section M60.
  - 11. New timber door**
    - New external door mounted within new solid hardwood timber frame fixed into brickwork reveal as specification section L20.215 and 330.
    - Door to be faced with tongue-and-groove panelling to match dimensions and detailing of existing.
    - Door and frame are not required to be fire rated
    - Door to be outward opening
  - 12. Intercom totem**
    - Intercom unit within flush box recessed at 1600mm high in metal totem. Allow for contiguous metal encased assembly to Jamie Fobert Architects' specification. Structure to be to fabricator's design, assumed formed from steel section made up in its entirety off-site and bolted to concrete pad foundation. SE to advise on minimal footing dimension. Mounting box to be fitted securely within metal casing enclosure with weather-tight seal. Final design to be signed off by Jamie Fobert Architects prior to construction
  - 13. Ironmongery**
    - Black painted brass pull handle to outside face, and brass push plate to inside face. Refer to ironmongery schedule.
  - 14. Automated door opener/ closer.** Refer to ironmongery schedule.
  - 15. New Ceiling** by Jamie Fobert Architects

NB  
All areas and methodologies given for conservation and repairs are subject to full condition survey following strip-out.

**Notes:**

Drawings are based on survey data however any discrepancies, should be notified to Purcell in writing.

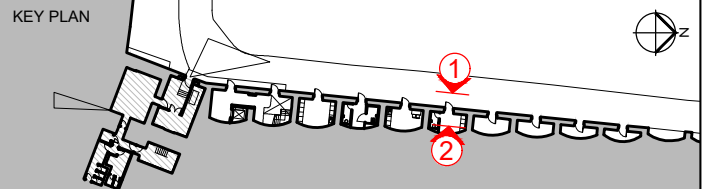
Due to the scales used any measurements from this drawing should include an appropriate level of tolerance.

Where appropriate site dimensions should be taken to verify accuracy of measurement.

All dimensions are in millimetres unless noted otherwise.

Purcell shall be notified in writing of any discrepancies.

The digital content in this DWG file is the property of Purcell Architecture Limited and is shared for information only. Do not copy, share, or reuse any part of it without our written permission.



P03	17.10.2025	RP	KSH	TENDER DRAFT
P02	18.07.2025	KSH	JMcK	STAGE 4 - FOR APPROVAL
P01	27.06.2025	KSH	JMcK	STAGE 4B - FOR INFORMATION
REV	DATE	BY	CHK	DESCRIPTION

CLIENT  
**Historic Royal Palaces**

PROJECT  
**Tower of London Education Facilities**

JOB NUMBER  
**243442**

TITLE  
**Conservation Repairs & Works to Moat Arch Doors - New Door**

**D.A6.01 Elevations**

SIZE SCALE  
A3L 1:20

REV SUITABILITY/REASON FOR ISSUE  
**P03 S4 - FOR APPROVAL**

DRAWING NUMBER  
**243442-PUR-01-XX-DR-A-3716**

PURCELL® IS THE REGISTERED TRADE NAME FOR PURCELL ARCHITECTURE LTD AND ALL SUBSIDIARY COMPANIES AND IS REGISTERED IN THE UNITED KINGDOM, EUROPEAN UNION, HONG KONG, CHINA AND AUSTRALIA.  
© PURCELL 2025. www.purcelluk.com

